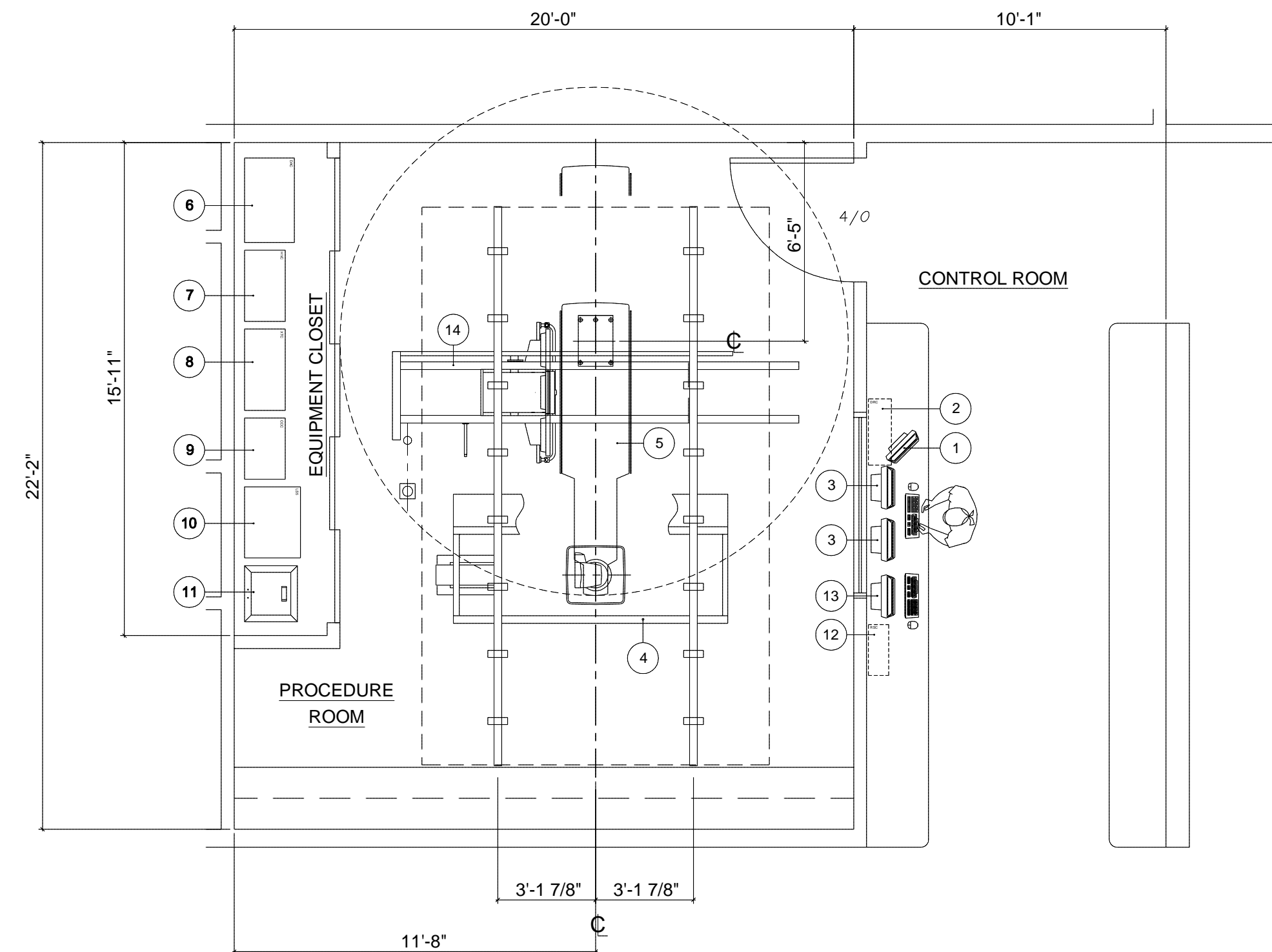


EQUIPMENT SCHEDULE

NOTES	EQUIPMENT IDENTIFICATION NUMBER					
	#	DESCRIPTION	BTU / HOUR	WEIGHT (LBS.)		#
			DIMENSIONS (IN.)	W	D	
	1	SHIMADZU TRINIAS SYSTEM DISPLAY	15.51	6.18	14.53	11
	2	1024 SHIMADZU TRINIAS DIGITAL REFERENCE CABINET	8.86	25.71	20.31	77
	3	SHIMADZU TRINIAS 19" LCD MONITOR (ACQUISITION & REFERENCE DISPLAYS)	16.73	9.25	17.72	22
	4	3413 SHIMADZU TRINIAS MH-200S CEILING MOUNTED C-ARM SYSTEM	216.53	114.32	112.25	2640
	5	SHIMADZU TRINIAS KS-70 TABLE	113.38	27.56	47.25	778
	6	SHIMADZU TRINIAS DIGITAL ACQUISITION CABINET	32.68	19.29	71.26	551
	7	SHIMADZU TRINIAS HIGH VOLTAGE CABINET	27.56	15.75	71.06	666
	8	21151 SHIMADZU TRINIAS X-RAY TUBE CONTROL CABINET	31.50	15.75	68.90	595
	9	SHIMADZU TRINIAS C-ARM CONTROL CABINET	23.62	15.75	68.90	243
	10	SHIMADZU TRINIAS LS-5 AUXILIARY STORAGE CABINET	27.56	21.65	68.90	385
	11	2000 SHIMADZU TRINIAS 200KVA POWER DISTRIBUTION UNIT	21.70	20.50	44.50	841
	12	SHIMADZU TRINIAS REVIEW STATION CABINET (VRS)	7.87	19.69	16.73	40
	13	1024 SHIMADZU TRINIAS 19" LCD MONITOR (REVIEW STATION DISPLAY)	16.73	9.25	17.72	22
	14	NOTE #1 SHIMADZU TRINIAS MTA-40 MONITOR SUSPENSION (WITH DISPLAYS)	157.50	54.50	67.17	881

NOTE #1: NOT INCLUDED IN TOTAL SYSTEM BTU. CONSULT WITH EQUIPMENT REPRESENTATIVE.



PROPOSED EQUIPMENT LAYOUT
 (ACTUAL DIMENSION MUST BE FIELD VERIFIED)
 (REQUIRED FINISHED CEILING HEIGHT IS 9'-4" OR 9'-2" - HEIGHT DETERMINED AT TIME OF EQUIPMENT ORDER)



SUBMITTED BY:



FACILITY:

**TYPICAL
ROOM LAYOUT**

FILE NAME:

TRINIAS

SCALE:

1/4" = 1'-0"

SHEET:

DRAWN BY:

DAVID HENRY

DATE:

08.15.2017

B-1