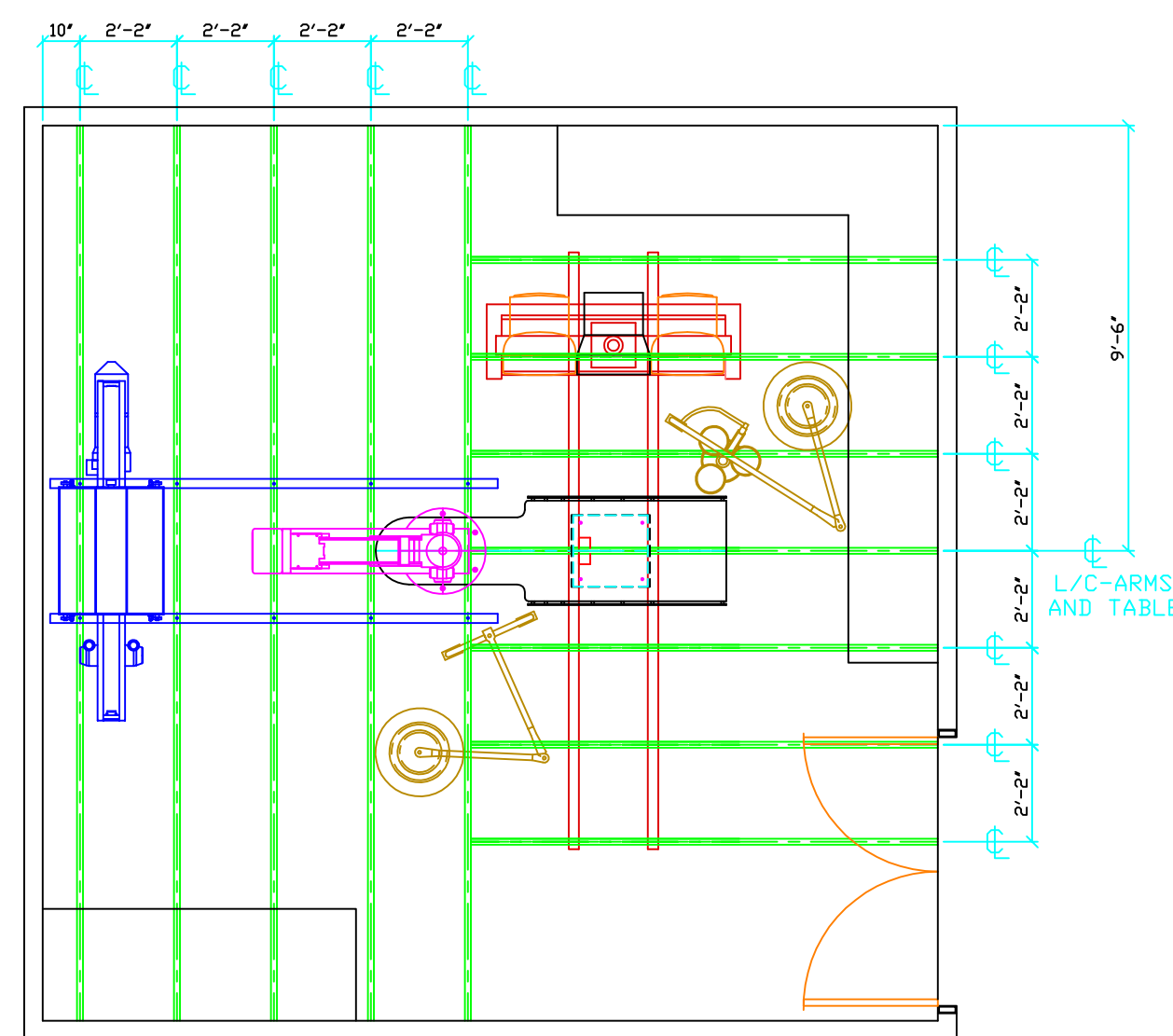
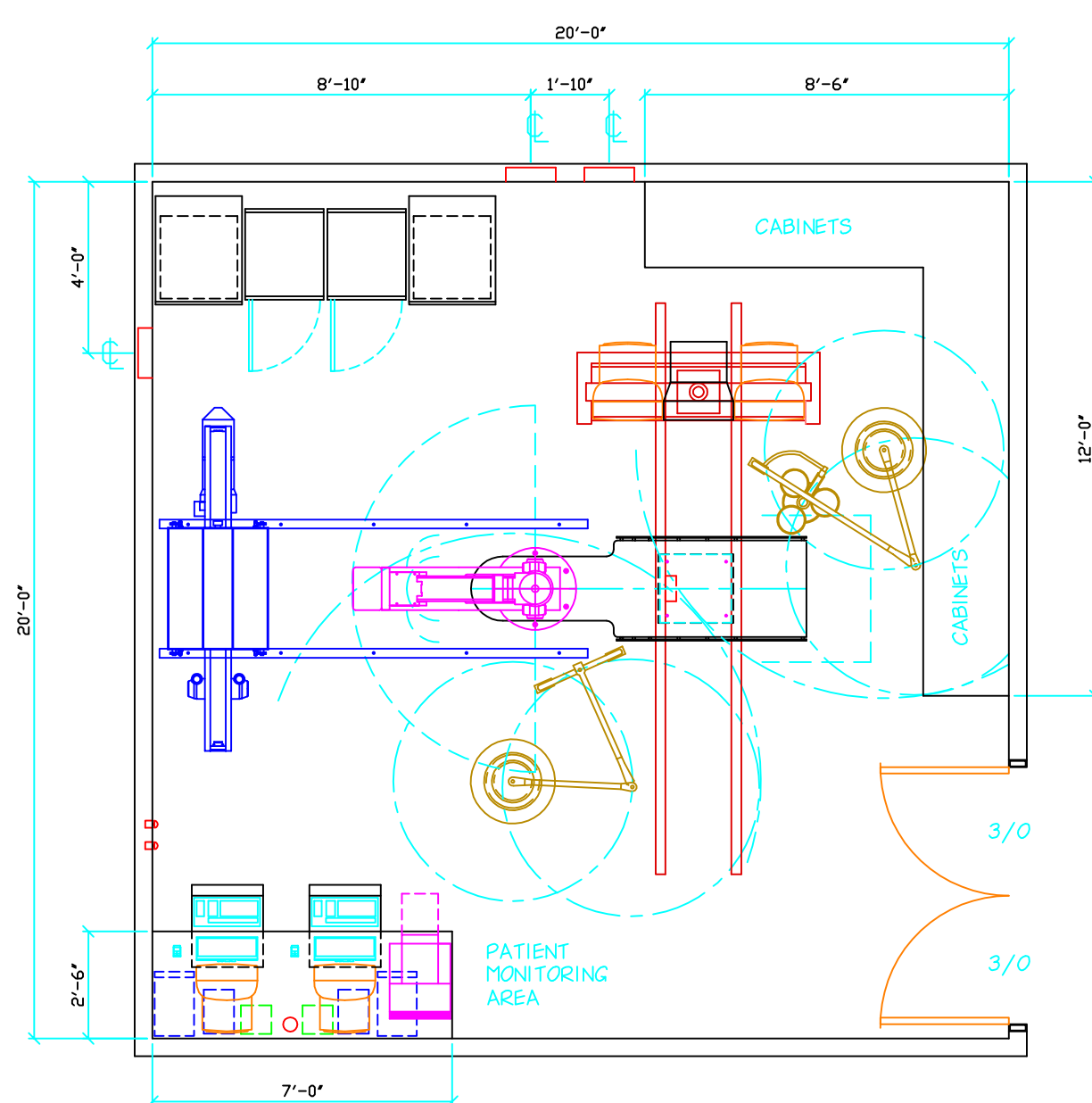


PROPOSED EQUIPMENT LAYOUT



RECOMMENDED UNISTRUT GRID



PROPOSED EQUIPMENT LAYOUT
(DASHED LINED DEPICT EQUIPMENT TRAVEL AND DOOR SWINGS)

EQUIPMENT SCHEDULE

NOTES	EQUIPMENT IDENTIFICATION NUMBER					
	QTY	DESCRIPTION	BTU / HOUR		WEIGHT (LBS.)	
			W	D	H	
DFCI 1	50	OMEGA MEDICAL IMAGING, INC. (0-PIC 100 C/V) A-370 100kw AP X-RAY GENERATOR OPERATOR CONSOLE (COUNTER MOUNTED)	17.06	8.69	2.63	9
DFDI 2	600	OMEGA MEDICAL IMAGING, INC. (0-PIC 100 C/V) A-370 100kw AP X-RAY GENERATOR POWER SUPPLY	24.25	30.37	65.31	1600
DFDI 3	350	OMEGA MEDICAL IMAGING, INC. B-200 AP EPS L/C POSITIONER (FLOOR MOUNTED)	23.00	62.50	84.25	635
DFDI 4	100	OMEGA MEDICAL IMAGING, INC. C-400 TILTING/ELEVATING TABLE	27.00	94.00	43.00	625
DFDI 5	1000	OMEGA MEDICAL IMAGING, INC. I-100 AP L/C AND TABLE ELECTRONICS RACK CABINET	22.00	25.50	76.00	400
DFDI 6	50	OMEGA MEDICAL IMAGING, INC. (0-PIC 60 F) A-340 60kw LAT X-RAY GENERATOR OPERATOR CONSOLE (COUNTER MOUNTED)	17.06	8.69	2.63	9
DFDI 7	600	OMEGA MEDICAL IMAGING, INC. (0-PIC 60 F) A-340 60kw LAT X-RAY GENERATOR POWER SUPPLY	24.25	30.37	65.31	1600
DFDI 8	500	OMEGA MEDICAL IMAGING, INC. B-350 LATERAL EPS POSITIONER (CEILING MOUNTED)	96.25	120.00	96.00	750
DFDI 9	1000	OMEGA MEDICAL IMAGING, INC. I-105 LAT L/C AND INTERFACE BI-PLANE RACK CABINET	22.00	25.50	76.00	400
DFDI 10	N/A	OMEGA MEDICAL IMAGING, INC. D-601 3 OVER 3 MONITOR SUSPENSION SYSTEM (CEILING SUSPENDED FIXED POST)	160.00	49.00	68.00	620
DFDI 11	1200	OMEGA MEDICAL IMAGING, INC. D-500 21" FIMI IMAGE MONITOR (x4) (CEILING SUSPENDED)	19.60	21.93	19.09	
DFDI 12	800	OMEGA MEDICAL IMAGING, INC. E-500 AP PC CABINET (BENEATH CABINET)	11.00	18.00	26.00	65
DFDI 13	300	OMEGA MEDICAL IMAGING, INC. AP D-501 AP 17" FIMI IMAGE MONITOR (COUNTER MOUNTED)	16.77	19.29	17.44	58
DFDI 14		OMEGA MEDICAL IMAGING, INC. E-500 AP PC KEYBOARD (ON SLIDING SHELF)	19.00	8.00	3.00	4
DFDI 15		OMEGA MEDICAL IMAGING, INC. AP E-500 POWER CONDITIONER (UPS) (BENEATH COUNTER)	8.50	8.00	4.25	32
DFDI 16		OMEGA MEDICAL IMAGING, INC. E-500 AP ISOLATION TRANSFORMER	8.50	12.25	7.25	32
DFDI 17	800	OMEGA MEDICAL IMAGING, INC. E-502 LAT PC CABINET (BENEATH CABINET)	11.00	18.00	26.00	65
DFDI 18	300	OMEGA MEDICAL IMAGING, INC. LAT D-501 AP 17" FIMI IMAGE MONITOR (COUNTER MOUNTED)	16.77	19.29	17.44	58
DFDI 19		OMEGA MEDICAL IMAGING, INC. E-502 LAT PC KEYBOARD (ON SLIDING SHELF)	19.00	8.00	3.00	4
DFDI 20		OMEGA MEDICAL IMAGING, INC. LAT E-502 POWER CONDITIONER (UPS) (BENEATH COUNTER)	8.50	8.00	4.25	32
DFDI 21		OMEGA MEDICAL IMAGING, INC. E-502 LAT ISOLATION TRANSFORMER	8.50	12.25	7.25	32
DFDI 22	1200	CONDONICS (OPTIONAL) NP-1660M MEDICAL PRINTER	17.00	23.50	12.00	69
DFDI 23	300	OMEGA MEDICAL IMAGING, INC. OPTIONAL SURGICAL SPOT LIGHT (CEILING SUSPENDED)	R86" MAX. SWING		68.00	250
DFDI 24	N/A	OMEGA MEDICAL IMAGING, INC. OPTIONAL RADIATION SHIELD (CEILING SUSPENDED)	R86" MAX. SWING		68.00	250

NOTE EXPLANATION:
CFCI = CONTRACTOR FURNISHED - CONTRACTOR INSTALLED
DFCI = OWNER FURNISHED - CONTRACTOR INSTALLED
DFDI = OWNER FURNISHED - OWNER INSTALLED

© THESE DRAWINGS ARE COPYRIGHTED. THEY ARE RESTRICTED TO THE SOLE USE OF OMEGA MEDICAL IMAGING, INC.
THESE DRAWINGS ARE FOR CONCEPTUAL INTERPRETATION ONLY AND ARE NOT INTENDED FOR CONSTRUCTION.
THESE DRAWINGS MAY NOT BE COPIED OR DISTRIBUTED TO ANY OTHER INDIVIDUAL OR ORGANIZATION WITHOUT A WRITTEN CONSENT BY OMEGA MEDICAL IMAGING, INC.

RECOMMENDED ROOM SIZES:
MINIMUM 18'-0" x 18'-0"
NOMINAL 20'-0" x 20'-0"
IDEAL 22'-0" x 22'-0"

HEATING, VENTILATING AND AIR CONDITIONING REQUIREMENTS
OPERATING TEMPERATURE RANGE: 68° F (20° C) - 75° F (24° C).
INTAKE AIR TO ALL EQUIPMENT SHALL BE MAINTAINED WITHIN THIS RANGE.
RELATIVE HUMIDITY RANGE: 30% - 70% NDW CONDENSING.
REFER TO EQUIPMENT SCHEDULE FOR INDIVIDUAL EQUIPMENT BTU/HR RATING.

TERMINAL SCHEDULE

(CONTRACTOR FURNISHED - CONTRACTOR INSTALLED)

ITEM	DESCRIPTION
	FACILITY TO DETERMINE 75KVA, 480VAC, 3-PHASE, POWER SOURCE LOCATION FOR X-RAY GENERATOR.
AA	NEMA 1, 480VAC, THREE PHASE, 5-WIRE, FRONT OPERATED, CIRCUIT BREAKER ENCLOSURE WITH GROUND ACCESSORIES. ENCLOSURE SHALL CONTAIN ONE 70AMP, 3-POLE, THERMAL MAGNETIC CIRCUIT BREAKER WITH SHUNT TRIP DEVICE. FLUSH MOUNT IN WALL WHERE SHOWN. LOCATE ENCLOSURE CENTER LINE 5'-6" A.F.F. NOTE: EC SHALL ENSURE THAT LUGS ARE LARGE ENOUGH TO FACILITATE OVERSIZED INCOMING CABLES REQUIRED BY X-RAY EQUIPMENT. REFER TO 'INCOMING WIRE SIZE' NOTES.
AL	NEMA 1, 480VAC, THREE PHASE, 5-WIRE, FRONT OPERATED, CIRCUIT BREAKER ENCLOSURE WITH GROUND ACCESSORIES. ENCLOSURE SHALL CONTAIN ONE 70AMP, 3-POLE, THERMAL MAGNETIC CIRCUIT BREAKER WITH SHUNT TRIP DEVICE. FLUSH MOUNT IN WALL WHERE SHOWN. LOCATE ENCLOSURE CENTER LINE 5'-6" A.F.F. NOTE: EC SHALL ENSURE THAT LUGS ARE LARGE ENOUGH TO FACILITATE OVERSIZED INCOMING CABLES REQUIRED BY X-RAY EQUIPMENT. REFER TO 'INCOMING WIRE SIZE' NOTES.
A1	NEMA 1, 240/120VAC, SINGLE PHASE, 4-WIRE, COMMERCIAL GRADE, GENERAL PURPOSE, LOADCENTER. LOADCENTER SHALL CONTAIN FRONT OPERATED, THERMAL MAGNETIC, CIRCUIT BREAKERS WITH THE FOLLOWING RATINGS: LINE 100AMP, 2-POLE, MAIN; LINE 20AMP, 2-POLE, CIRCUIT BREAKER FOR THE ELECTRONICS RACK CABINET; IDENTIFY CB AS '1-100' POWER. LINE 15AMP, 2-POLE, CB FOR THE AP X-RAY CONTROL; IDENTIFY CB AS 'AP CONTROL VOLTAGE' POWER. LINE 15AMP, 2-POLE, CB FOR THE LAT X-RAY CONTROL; IDENTIFY CB AS 'LAT CONTROL VOLTAGE' POWER. LINE 20AMP, 1-POLE, CB FOR THE MONITOR CARRIER; IDENTIFY CB AS 'MONITOR STRIP' POWER. LINE 20AMP, 1-POLE, CB FOR THE AP DIGITAL SYSTEM; IDENTIFY CB AS 'AP DIGITAL RECEPTACLE' POWER. LINE 20AMP, 1-POLE, CB FOR THE AP DIGITAL SYSTEM; IDENTIFY CB AS 'LAT DIGITAL RECEPTACLE' POWER. LINE 15AMP, 1-POLE, CB FOR THE PRINTER; IDENTIFY CB AS 'PRINTER RECEPTACLE' POWER. LINE 15AMP, 1-POLE, CB FOR THE SPOT LIGHT; IDENTIFY CB AS 'SPOT LIGHT' POWER. THREE 15AMP, 1-POLE SPARES. FLUSH MOUNT IN WALL WHERE SHOWN. LOCATE ENCLOSURE CENTER LINE 5'-6" A.F.F.

INCOMING WIRE SIZE NOTES

(CONTRACTOR FURNISHED - CONTRACTOR INSTALLED)

LISTED BELOW IS THE RELATIONSHIP BETWEEN THE LENGTH AND SIZE OF EACH INCOMING WIRE, WITH THE ASSUMPTION THAT THE POWER SOURCE HAS THE REQUIRED CAPACITY. THE VOLTAGE REGULATION UNDER LOAD VARIATION IS CALCULATED TO BE WITHIN ±5%. BE SURE TO USE WIRE SIZES INDICATED OR GREATER.

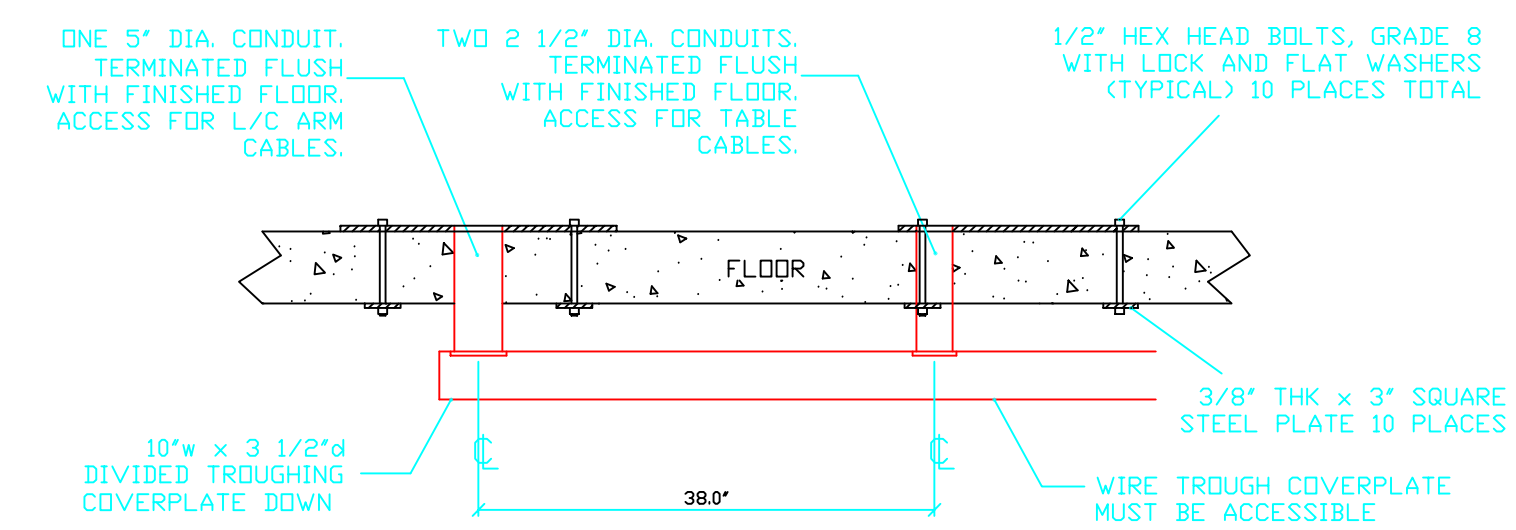
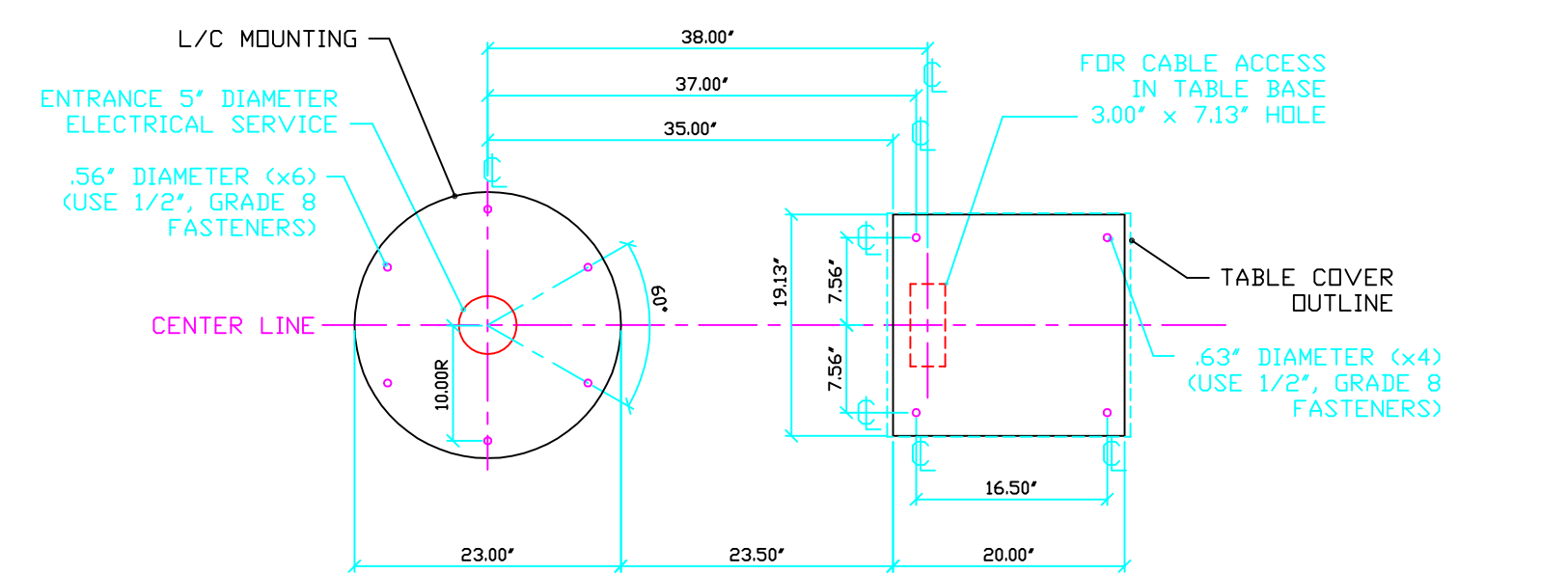
RECOMMENDED POWER TO THE MAIN DISCONNECT: 480VAC, THREE PHASE, 75KVA
MAIN CIRCUIT BREAKER: 70AMP, 3-POLE

X-RAY GENERATOR: OMEGA A-340(0-PIC 60F), A-350(0-PIC 60RF), A-370(0-PIC 100C/V)

PROVIDE THE APPROPRIATE WIRE SIZE FROM POWER SOURCE TO MAIN DISCONNECT:

WIRE LENGTH	50'	100'	200'	300'
FEEDER SIZE				
LINE:	#6AWG	#4AWG	#2AWG	#1AWG
NEUTRAL:	#6AWG	#4AWG	#2AWG	#1AWG
GROUND:	#8AWG	#6AWG	#4AWG	#2AWG

PATIENT SAFETY GROUNDING CONSIDERATIONS:
A SPECIAL GROUNDING SYSTEM IS REQUIRED IN ALL DIAGNOSTIC ROOMS BY SOME STATE AND LOCAL CODES. THIS GROUNDING SYSTEM IS STRONGLY RECOMMENDED IN AREAS WHERE ELECTRICALLY SUSCEPTIBLE PATIENTS MIGHT BE EXAMINED OR TREATED UNDER PRESENT, FUTURE OR EMERGENCY CONDITIONS. CONSULT WITH THE GOVERNING ELECTRICAL CODES AND CONFER WITH APPROPRIATE HOSPITAL ADMINISTRATIVE PERSONNEL AND CONSULTING ENGINEERS TO DETERMINE THE AREAS REQUIRING THIS GROUNDING SYSTEM. IF SUCH A GROUNDING SYSTEM IS REQUIRED, THE RESPONSIBLE CONSTRUCTION PARTICIPANTS SHALL DESIGN AND INSTALL GROUNDING SYSTEM TO INCLUDE ALL METAL OBJECTS AND FIXTURES.



GENERAL CONTRACTOR SHALL DRILL ANCHOR HOLES FOR MOUNTING OF B-200 L/C C-ARM AND C-400 TABLE.

B-200 L/C POSITIONER AND C-400 TABLE BASE BENEATH FLOOR MOUNTING DETAIL

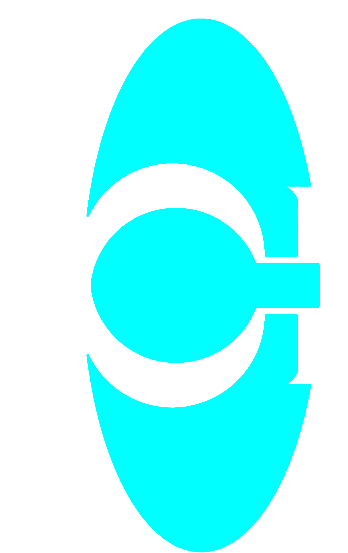
TYPICAL OMI - CS - 40
ELECTROPHYSIOLOGY
BI - PLANE SUITE

DIAGNOSTIC IMAGING
CENTER

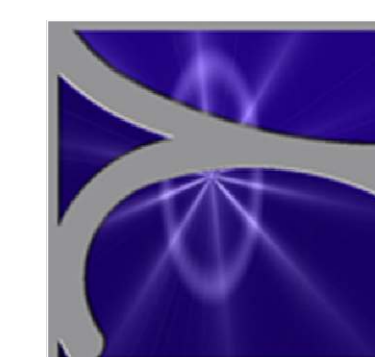
Omega Medical Imaging, Inc.

Phone: 407-323-9400
Fax: 407-323-9331

675 HICKMAN CIRCLE
SANFORD, FL 32771



GAMMA TECH, INC
129 Wild Berry Lane
Hampstead, NC 28443
Ph (910) 270-9787
Fax (910) 270-9767
www.gammatech.net



SUBMITTED BY
APPROVED BY:

FILE NAME: OMEGACS40
DRAWING SET NO.
SCALE: NOTED
ISSUED OR REVISED DATE
CONCEPTUAL 08-14-2000
REVISED 10-20-2000
REVISED 05-01-2001
REVISED 12-20-2001

DRAWN BY: S.M. PULAR
APPROVED BY: DM
SHEET TITLE:
ROOM AND EQUIPMENT
LAYOUT PLAN
SHEET NO.: